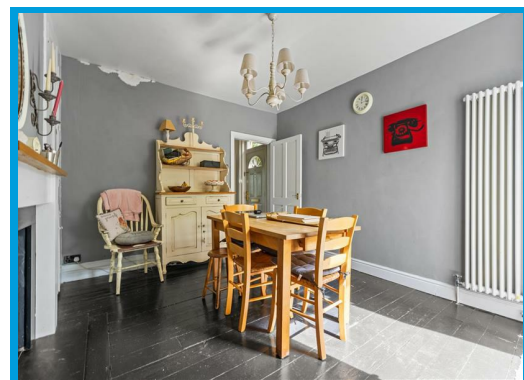
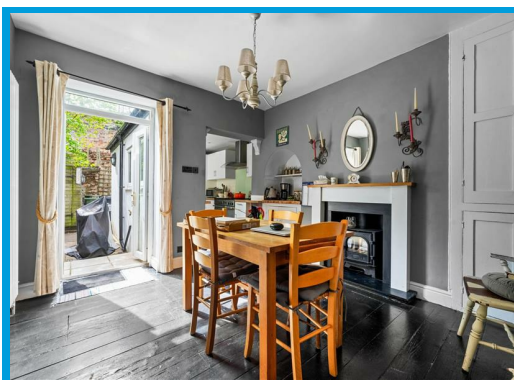
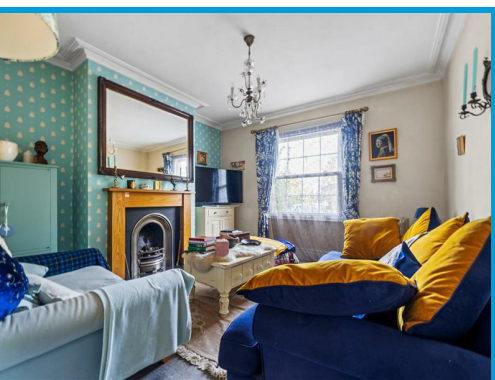




Nightingale Road, Guildford, GU1 1EP

Asking Price £750,000

Located in a prime town centre location overlooking Stoke Park, this stunning four bedroom Victorian townhouse boasts spacious accommodation arranged over four floors. With character features throughout and two off street parking spaces, this is a unique opportunity to own an imposing and iconic property close to both train stations.



Description

Welcome to Nightingale Road, Guildford - a charming location for this stunning Victorian townhouse overlooking Stoke Park.

Arranged over four floors, the ground floor accommodation boasts a spacious lounge, a separate dining room, a modern kitchen, cloakroom and a utility room.

The lower ground floor features a tanked basement and on the first floor there is large master bedroom and a family bathroom with separate shower cubicle.

The top floor boasts two double bedrooms.

Positioned opposite Stoke Park, the property has stunning views. There are character features throughout, including beautiful fireplaces and sash windows.

Outside, the property has a walled courtyard garden, a shed for storage and for convenience there is side access directly in to the garden.

The Victorian architecture adds character and charm to this already impressive house, making it a truly unique find. The spacious layout provides ample room for all your needs.

Located in the picturesque town of Guildford, you'll have easy access to local amenities, highly popular schools, and transport links, making this property not only beautiful but also conveniently situated. Don't miss out on the opportunity to make this Victorian townhouse your new home.

